



# Koinonia Fellowship of Churches

## Fellowship Manual

**Bishop Lawrence F. Chiles**

1001 Harrison Street

Philadelphia, Pennsylvania 19124

215-904-7499

Email: [urbanlove@comcast.net](mailto:urbanlove@comcast.net)

**Koinonia Fellowship of Churches  
2007**

## **Koinonia Fellowship of Churches History**

In the nineteen seventies the Lighthouse Community Church was planted and subsequently planted other congregations. These churches were under the leadership of the Lancaster Mennonite Conference. Koinonia Fellowship will always be grateful for the role of the Conference in leading these churches. We are thankful for our Anabaptist roots and continue theologically as urban Anabaptists. Koinonia Fellowship of Churches began in February 2002 by the leading of the Holy Spirit and the discernment of *pastors and congregations to become a new distinct network.*

## KFC Vision, Mission and Values

### Koinonia's Vision

Our vision is to be an apostolic fellowship committed to mentor and prepare leaders who can build and multiply contemporary New Testament-oriented churches.

### Koinonia's Mission

Our mission as Anabaptists, we are urban and metropolitan churches interested in impacting our regional settings and places around the world with the Great Commission of Jesus Christ. We seek to create caring communities of dynamic Spirit-led worship, teaching, leadership development and evangelism with discipleship that is Christo-centric.

KFC values and affirms each gift in the Body of Christ. KFC believes the Holy Spirit uses all sanctified vessels including men, women and children as instruments of ministry for the *building-up of the Kingdom of God*.

### Koinonia's Values: L.E.A.D.

The KFC model for ministry is rooted in its values. It seeks to use the L.E.A.D. model of ministry, (Leadership Development, Evangelization, Administration, and Discipleship). KFC is committed to being equipped for mission in the 21<sup>st</sup> Century which is doing theology in ministry. Koinonia through the power of the Holy Spirit seeks to LEAD its churches in empowering individuals, families, ministries and communities under the discipleship of God.

### Leadership Development

KFC seeks to be intentional in its training and instruction and practical in its application of Spiritual Reproduction as seen in II Timothy 2:2. We seek to provide opportunities for education and training formally and informally to ensure sound and effective spiritual reproduction.

### Evangelization

KFC seeks to fulfill the Great Commission through personal evangelism, church planting initiatives and mission outreach in our

communities and around the world. We seek to partner with all who share our passion for reaching the world for Christ. We see the church in its various forms as the center for missions.

### **Administration**

KFC seeks to establish and implement accounting and record keeping systems that will bring integrity and order to the administrative business of KFC, as an organization, and congregations and ministries. We seek to glorify God by obeying the laws and regulations of civil government. We seek to glorify God through an efficient use of our resources.

### **Discipleship**

KFC seeks to inspire and enable every leader to make disciples in their networks by providing life-coaching, mentoring, counsel, Biblical instruction for each Christian in their sphere of influence.

## KFC Statement of Faith: Koinonia's Beliefs

### **Scripture**

We believe the Bible (the 66 books of the Old and New Testaments) is the Word of God, written. As a "God-breathed" revelation, it is thus verbally inspired and completely without error (historically, scientifically, morally, and spiritually) in its original writings. While God the Holy Spirit supernaturally superintended the writing of the Bible, that writing nevertheless reflects the words and literary styles of its individual human authors. Scripture reveals the being, nature, and character of God, the nature of God's creation, and especially His will for the salvation of human beings through Jesus Christ. *The Bible is therefore our supreme and final authority in all matters that it addresses.*

### Creation

We believe that the *physical universe, the realm of nature, is the visible creation of God*. It declares God's existence and gives a trustworthy revelation of God's character and purpose. In Scripture, God declares that through His creation all humanity recognizes His existence, power, glory, and wisdom. An honest study of nature -- its physical, biological, and social aspects -- can prove useful in a person's search for truth. Properly understood, God's Word (Scripture) and God's world (nature), as two revelations (one verbal, one physical) from the same God, will never contradict each other.

We believe God created the family. We believe He intended the family to consist of a man and woman in marriage and children as the product of that union. We do not believe in same sex unions. We do recognize that sin has broken the family unit. God desires to redeem individuals from bad marriages, divorce, and fornication. We believe there are many Christians now leading wholesome families as single parents. We believe those who have been divorced can experience Christ's healing and forgiveness. We believe that singleness is an honorable life choice. We further recognize and affirm the single lifestyle as wholesome and complete for those who choose it.

### God

We believe in one infinitely perfect, eternal and personal God, the transcendent Creator and sovereign Sustainer of the universe. This one God is Triune, existing

eternally and simultaneously as three distinct persons: Father, Son, and Holy Spirit. All three persons in the Godhead share equally and completely the one divine nature, and are therefore the same *God, coequal in power, nature, and glory.*

### **Person of Christ**

We believe that Jesus Christ is both true God (the second Person of the Trinity) and true man (the Incarnate Son of God). We also believe in the great events surrounding Jesus Christ's life and ministry, including: His eternal preexistence, His virgin birth, His attesting miracles, His sinless life, His sacrificial death on the cross, His glorious bodily resurrection from the dead, His ascension into heaven, and His present work in heaven as High Priest and Advocate. He will return in glory to resurrect and judge all humankind.

### **Person of the Holy Spirit**

We believe that the Holy Spirit, the third Person of the Trinity, is indeed a Divine Person, coequal with the Father and the Son. We believe in the ministry of the Holy Spirit in salvation, a ministry which includes anointing and glorifying Christ, convicting men of their sin, bringing about the regeneration of lost sinners, and indwelling believers and empowering them for godly living and spiritual service. We also believe in the baptism of the Holy Spirit where God deposits gifts in each believer to be used as a witness to unbelievers and as tools for up-building the church.

### **Humankind**

We believe God created humanity in His image and likeness (having rational, moral, relational, and spiritual capacities) to fellowship with Him and give Him glory. Human beings are therefore the crown of God's creation (possessing inherent dignity and moral worth), and thus distinct in kind from all other life on earth. Adam and Eve, the first human beings, chose to rebel against God and go their own autonomous way. As a result, all of humanity became separated from God, the image of God in man distorted, and the sinful nature passed on to all their progeny. Because of original sin (which includes both corruption and guilt), unregenerate human beings are incapable of pleasing or commending themselves to God. The only remedy for humankind's pitiful predicament is redemption through faith in Jesus Christ.

### **Redemption**

We believe God has acted sovereignly to bridge the gap that separates people from

Himself. He sent His Son, born of a virgin, attested by miracles and by a sinless life, to bear the full penalty for humanity's sin. Jesus Christ suffered and died in the place of sinners, thus satisfying the Father's just wrath against human sin, and effecting true reconciliation between God and humanity for those who believe. In the atoning death of Christ, both God's love and God's justice are fully manifested. The righteousness of Jesus Christ in perfectly fulfilling the law of God has been graciously credited to all believers. Redemption is solely a work of God's grace, received exclusively through faith in Jesus Christ, and never by works of human merit.

We believe that, only through Jesus Christ, God offers salvation from sin and a new way of life. We receive God's salvation and are born again by the Spirit of God when we repent and accept Jesus Christ as Lord and Savior. It is by faith through God's grace that we are saved.

### **Justification**

We believe justification is a judicial act of God's grace wherein He acquits a person of all sin and accepts that person as righteous in His sight because of the imputed righteousness of Christ. Justification is strictly a work of God's grace, apprehended through faith alone, and solely on the account of Christ.

### **Resurrection**

We believe Jesus Christ rose bodily from the dead, conquering sin, death, and all the powers of Satan. The resurrection is God's historical affirmation and vindication of Jesus Christ's unique identity, mission, and message. Historical evidence of the resurrection is manifest in Christ's empty tomb, His many resurrection appearances, and in the emergence of the Christian church. Jesus Christ now resides at the right hand of the Father, and lives to indwell all who recognize their sinfulness, who repent, and who turn their lives over to His authority.

### **The Church**

We believe the church is the spiritual body of Jesus Christ (its Founder, Head, and Shepherd) and that it encompasses all true believers at all times and places. The function of the church is to carry out the Lord's expressed will through the power of the Holy Spirit. One of the central purposes of the church is to preach the Gospel (in both word and life), the good news that humankind can find salvation from sin through faith in Jesus Christ. All people who have placed their faith (confident trust) in Jesus Christ for salvation belong to the church and are, thus, the people of God. This community of

believers is made up of people who are neither perfect nor sinless, but by grace their lives are coming more and more under the control of the Holy Spirit, expressing His love, joy, peace, and other Christ-like qualities.

### **Future Things**

We believe the Lord Jesus Christ will return to this earth, personally, bodily, and visibly to establish his glorious reign in a kingdom that will never end. As the sovereign Lord, He will resurrect and judge all humanity. Those who have received His offer of life through the Gospel will go to eternal blessings in heaven; those who have rejected it, to eternal conscious torment in hell. We look forward to the blessed hope, Christ's Second Coming in glory.

### **The Great Commission**

We believe Jesus Christ is the only way of salvation. And since Christ has commissioned His people, the church, to go into all the world to disciple, to baptize, and to teach everyone everywhere to obey His Word, we desire, by His grace, to play our part in reaching the world with the Gospel of Christ.

# **KFC Organization**

A new structure is emerging for KFC. Bishop Lawrence is committed to a team approach to leadership with every pastor involved.

## **Bishop Board**

This new structure will have Bishop Lawrence Chiles as lead or presiding bishop. Bishop Eugene H. Graves, Jr. will serve as advisory bishop and Bishop Leon Schnupp will serve as resource bishop (all bishops will serve on the executive board). As God prospers our future other roles will be created to meet KFC needs. KFC envisions regional bishop leadership wherever KFC ministry is growing.

## **Executive Board**

Added to their counsel will be an Executive Board made of the following ministry leaders; Rev. Charles Bulford, Rev. Kevin Granados, Rev. Kim Larson, Rev. John Mitchell, and Rev. Robert Montalvo. The executive board will coordinate, cooperate and collaborate to fulfill KFC's mission to its ministries.

## **Pastor's Network**

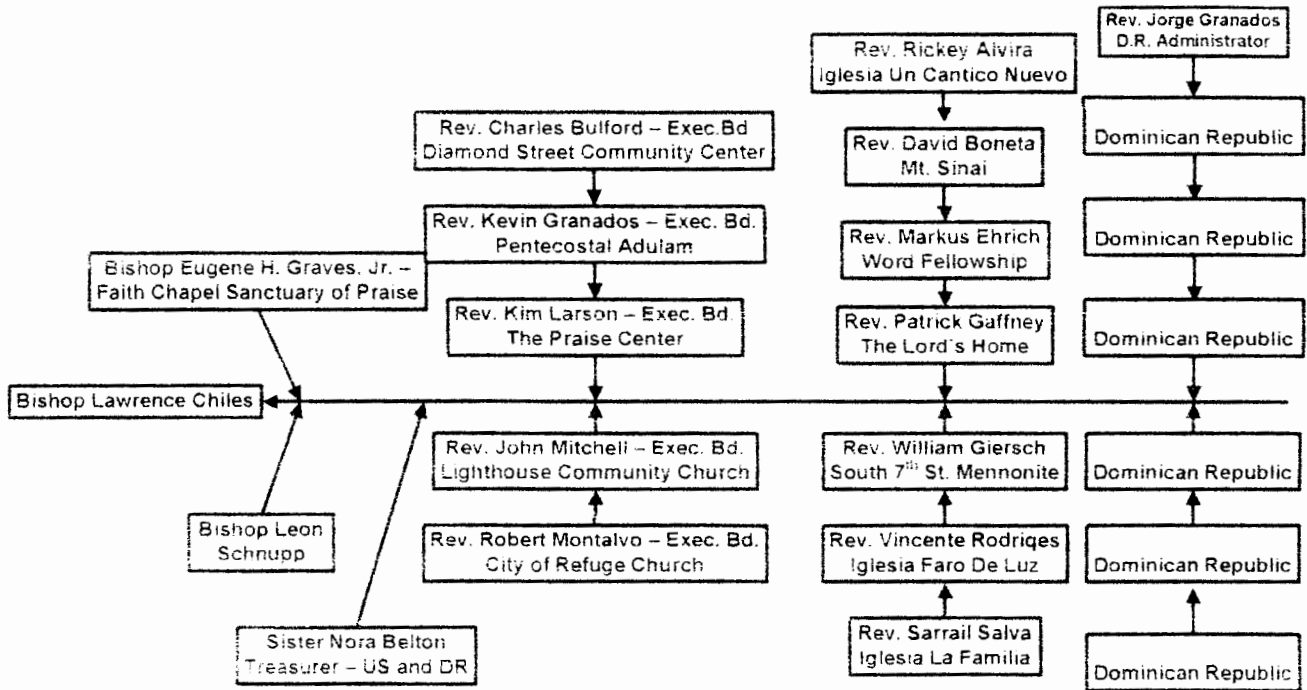
The pastor's network includes all pastors of KFC. All are asked to be ready to serve in specific leadership roles affirmed by the bishop board.

## **Dominican Republic Administration**

Pastor Jorge Granados serves as Dominican Republic Administrator and reports to the bishop board the needs and successes of the work in that country. The Bishop Board will consult with the executive board on matters that need their assistance and will periodically report to the Pastor's Network on the status of our mission initiatives.

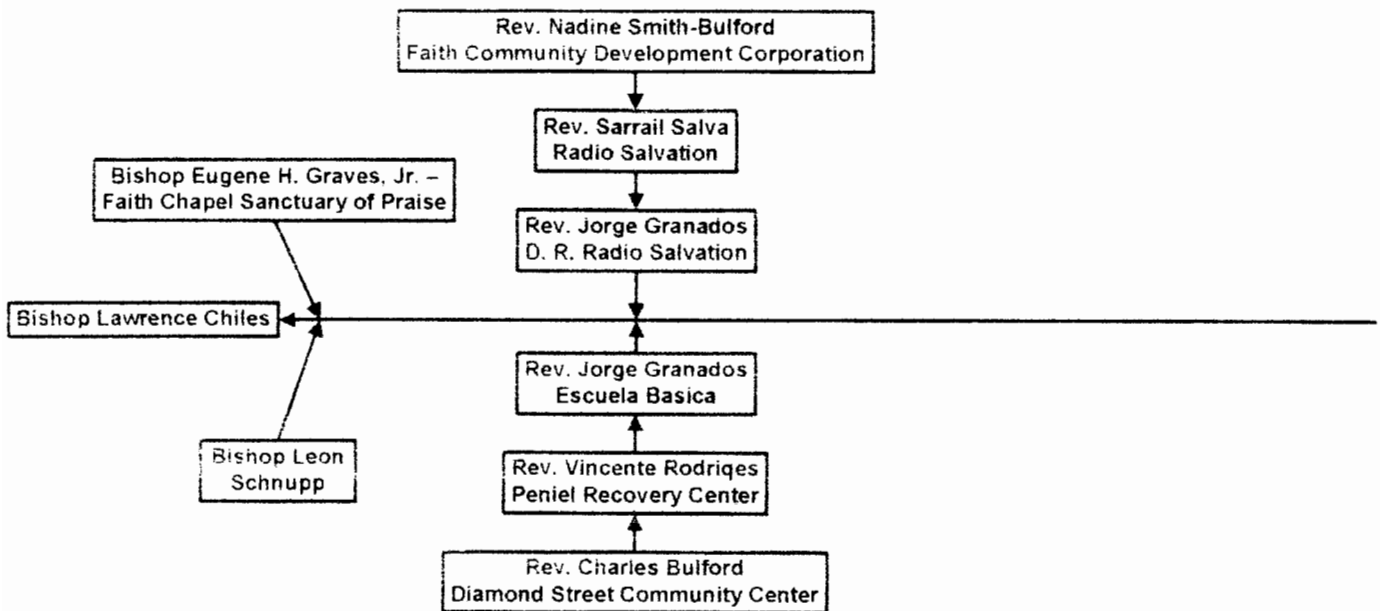
# New KFC Organizational Chart

The chart should be viewed from left to right.



The chart will change as church plants are added to KFC. The chart will change as ministry organizations and para-church ministries are developed. The chart will grow as other churches join KFC. The chart will also change as our mission spans the globe fulfilling the Great Commission of Jesus Christ.

# Related Ministries



## Fellowship Manual Guidelines Partner Churches

A partner church meets the following requirements:

- A partner church embraces the Koinonia Fellowship Vision, Mission, Values, Statement of Faith and Governance.
- The pastor of a partner church is licensed or ordained by the Koinonia Fellowship of Churches.
  - Those ordained elsewhere can have their credentials transferred to the fellowship.
- The pastor is encouraged to faithfully attend KFC's Pastor Network Meetings and embrace the oversight of the Bishops and the Koinonia Fellowship of Churches Executive Board.
- Requirements and procedures for a new partner or the creation of a new church plant must have all requirements satisfied by KFC.
- Partner churches by-laws must be in agreement with the guiding principles of the Koinonia Fellowship of Churches.
- Partner churches should embrace an apostolic understanding (five-fold ministry) of church government and the empowering of the Holy Spirit.
- All administration of property, assets, real estate, and liabilities are the responsibility of the partner church.
- Partner churches are encouraged to bless KFC through their budgets by supporting KFC administration and its mission outreach to the world.
- Partner churches are asked to provide a copy of their individual church/ organization Vision, Mission, Organizational Structure and By-Laws.

## Fellowship Manual Guidelines Steps To Becoming A Partner Church

- The leadership of the partner church supports the Vision, Mission, Values, Statement of Faith and the Guidelines in this Fellowship Manual.
- There needs to be time set aside for prayer and waiting before the Lord to receive the Lord's confirmation before the engagement begins.
- If the Lord gives confirmation, then with the KFC Executive Board a process begins to incorporate the new partner into the fellowship.
  - The pastor and the KFC Executive Board begins to build relationship.
  - KFC will assign a designated person from the KFC Executive Board to walk with the pastor and church in the early stages of this process.
  - The pastor begins to relate to other leaders within his geographic area within the Koinonia Fellowship.
  - The KFC Executive Board and the potential partner church, pastor and leadership must be in full agreement before any commitment is made.
  - If there is not an agreement, then the KFC Executive Board, the pastor, leadership need to discern if there is a different direction the Lord may be giving.
  - If there is full agreement between the KFC Executive Board and the potential partner church a letter of understanding will be signed by two members of the KFC Executive Board and two members of the new partner's leadership agreeing to KFC oversight.
  - Following an agreement, there will be a public commissioning service installing the new partner church into KFC.

## Fellowship Manual Guidelines Guidelines For Ministry Credentials

### Commissioning

Commissioning is recognizing someone's call to a specific ministry or task on behalf of the leadership team. Commissioning for specific roles in the congregation will be at the discretion of that congregation's pastor in consultation with their leadership team. Commissioning may be seen as a step toward licensing. Commissioning may also involve lay leadership (those not credentialed) and may occur simply to kick-off a new ministry. The church may choose to commission leadership for ministry roles as the need arises.

### Licensing

Licensing is an act in which individuals receive affirmation for their call to ministry for a two-year period with annual review. This affirmation gives them the right to perform duties of their office and other ministerial functions within the scope and practices of the local church. The local church is spiritually responsible for all licensed persons and their spiritual training. KFC desires walk with churches in their leadership development.

Credentials will be held by the *Koinonia Fellowship of Churches* but licensing for congregational ministry is at the discretion of and performed by the pastor and leadership of partner churches and organizations.

### Purpose Of A Ministry License:

- To provide a period of testing of a person's call before ordination or
- To provide affirmation and credentialing privileges for people in either a temporary or supportive leadership role requiring some type of license.

### Requirements For License:

- Person seeking a license in ministry must be of good character and in right relationship with God and the people. It is good if the person is recognized as part of the church leadership team.
- To function in a ministry where a license would be helpful to fulfill the role.

- We encourage other ministry roles to be commissioned instead of licensed; i.e. small group leaders, elders without a specific public ministry, other department leaders, and office staff.
- To be credentialed individual embraces the KFC Vision, Mission, Values and Statement of Faith.
- They demonstrate a clear sense of calling through a period of active ministry.
- They have the affirmation of partner leadership and the community.

### **Licensing Procedures:**

- The partner leadership recommend the person to the Bishop(s).
- The person fills out a credential application.
- The Bishop(s) recommend the person to the KFC Executive Board.
- The KFC Executive Board approves the person.
- The pastor of the partner church recommends the person to the congregation for licensing.
- The pastor, in consultation with the Bishop(s) performs the license ceremony.

### **Ordination:**

Ordination is an act in which individuals receive affirmation for their call to a lifetime in ministry as they serve faithfully in the Koinonia family of churches. This affirmation gives them the right to perform the duties of their office and any other ministerial functions within the scope and practices of the Koinonia Fellowship of Churches. Ordination for congregational leadership, pastor, church planter, or missionary will be at the discretion of the KFC Executive Board.

### **Purpose of Ordination:**

- To affirm a person's lifetime call to public ministry
- To provide credentialing privileges

## **Requirements For Ordination:**

- Licensed for *two years prior*.
- A clear sense of call to a lifetime of public ministry where credential privileges are required for service.
- Ordinations are usually reserved for those in primary leadership roles and those in full-time ministry; i.e. pastor, assistant pastor and associate pastor.
- Ministry roles that might change should consider licensing instead of ordination.
- Credentials issued by the KFC Executive Board are reviewed every two years by the Bishops and the KFC Executive Board. New ministry credential cards are issued upon the review.
- In cases of moral failure or mismanagement credentials issued by KFC may be recalled for a time or in the most serious cases revoked.

## **Qualifications:**

- Embraces the KFC Vision, Mission, Values, and Statement of Faith.
- Demonstrated qualities of leadership.
- A long-term commitment to an area of ministry.
- Affirmed by other leaders in the local church and community.

## **Ordination Procedures:**

- The pastor and leadership recommend the person to the Bishop(s).
- The person *fills out a credential application*.
- The Bishop(s) recommends the person to the KFC Executive Board.
- The KFC Executive Board interviews the person and gives approval.
- The Pastor and Bishop(s) recommends the person to the congregation for ordination.

- The Bishop(s), with participation of the local pastor, performs the ordination ceremony.

**Fellowship Manual Guidelines**  
**Pastoral Application**

1. Candidates hold to Christian orthodoxy and embrace all Scripture as the authority and inspired word of God.
2. Candidates must be committed to continually developing their ministry skills and a commitment to growing in their personal spiritual devotion to Christ.
3. Candidates with the help of the Holy Spirit lead the congregation/ communities in Biblical preaching, teaching, Christ-centered counseling and spiritual worship.
4. Candidates should imitate Christ in leading their congregations/ communities in a visionary way.
5. Candidate must be willing to support and be accountable to KFC and it's vision and leadership.
6. Candidate must be willing to attend and support KFC meetings.
7. Candidate must embrace the KFC Vision, Mission, Values, By-Laws, and Statement of Faith.

**Fellowship Manual Guidelines**  
**Church Planting And Community Organization Guidelines**

KFC has a missionary call from God to plant churches. As a fellowship we have been called to reproduce churches and community organizations that have a Koinonia imprint.

Before Koinonia Fellowship will consider any potential Christian ministries, the potential church leader must:

- Process the call with their pastor.
- Receive the blessing of their sponsoring ministry.
- Be prepared to wait for God's timing before planting a new ministry.

Before giving approval for a KFC sponsored ministry, we will expect that the ministry planter will successfully complete the following:

1. Fulfill the KFC Pastoral Application process.
2. Complete an assessment interview by members of the KFC Executive Board.

## Fellowship Manual Guidelines Withdrawal of Partner Churches

In the event a partner church desires to withdraw from KFC or if Bishops and Executive Board of KFC is recommending dismissal a process will be established to assess issues and strengthen relationships. If there is a sense that the Lord is changing the relationship of the partnership, then a process of withdrawal or dismissal shall be established. The pastor cannot withdraw from KFC unilaterally. A partner church desiring separation from KFC must have a three-quarter vote of the membership to do so. If KFC desires to dismiss a partner church there must be a three-quarter vote of the Executive Board to do so. The KFC Executive Board covets the unity of the fellowship and commits itself to work diligently at sustaining the partnership of churches.

The following steps are to guide those involved through the withdrawal or dismissal process. These steps can be modified by mutual agreement of the KFC Executive Board and the partner church.

1. Members of the KFC Executive Board (two or more) or designated persons shall meet with the church leadership. This meeting will further evaluate the need for withdrawal or dismissal. It is the continued prayer of KFC leadership that neither withdrawal or dismissal would be necessary after this meeting.
2. If separation is necessary, a memo of understanding will be written as to the reasons, terms and dates for the withdrawal signed by representatives of both parties. The time frame of withdrawal or dismissal should be no less than three months and no more than six months.
3. The KFC Executive Board, or designated persons shall meet with the congregation along with the pastor and leadership explaining the reasons for withdrawal or dismissal. The process is to answer any questions coming from the congregation.
4. A general climate of affirmation of KFC to the former partner church and the former partner church to KFC should exist as much as possible.
5. KFC will upon separation either transfer the pastor's credentials and other credentials to another organization as requested or cancel their spiritual covering of these ministers. Credentials should be surrendered to KFC upon departure.
6. The former partner church may not use the KFC as part of their name or any of its organizational documents.